


**FU0020 & FU0030**

Hydraulic oil transfer and filtration portable unit

**TECHNICAL INFORMATION**
**FRAME**

|                                   |  |
|-----------------------------------|--|
| SUPPORT FRAME AND FILTER HOUSING: | Carbon steel, painted, filter housing by aluminium   |
| SINGLE PHASE ELECTRIC MOTOR:      | 0,18 kW, 4 poles, 230V 50 Hz                         |
| PUMP PROTECTION:                  | Y type filter, 500 $\mu$ m.                          |
| OVERALL DIMENSIONS (LxPxH):       | 480 x 520 x 620 mm                                   |
| WEIGHT:                           | kg 23,5 approx for FU0020<br>kg 25 approx for FU0030 |

**ELEMENT**

tested according to ISO 2941, 2942, 2943, 3968, 16889, 23181

**!** A filter element must be fitted in the filter housing before start: See page 3.

|                              |  |
|------------------------------|--|
| OPERATING TEMPERATURE RANGE: | 0°C +80°C  |
| FLUID COMPATIBILITY:         | Full with HH-HL-HM-HV (acc. To ISO 2943).<br>For use with other fluid please contact Filtrec Customer Service (info@filtrec.it).<br><br>Viscosity: from 30 cSt to 150 cSt<br>For use with other fluids please contact the FILTREC Customer Service (info@filtrec.it) |

The unit is supplied complete with a Use and Maintenance Manual and it can be used only by authorized operators, that have read and understood completely the Manual.

**The FU units are CE certified**

## ORDERING INFORMATION

|           |             |          |          |            |          |           |
|-----------|-------------|----------|----------|------------|----------|-----------|
| 1.        | 2.          | 3.       | 4.       | 5.         | 6.       | 7.        |
| <b>FU</b> | <b>0030</b> | <b>4</b> | <b>M</b> | <b>015</b> | <b>B</b> | <b>01</b> |

|                   |      |                                    |
|-------------------|------|------------------------------------|
| 1. FILTER SERIES  | FU   |                                    |
| 2. MODEL          | 0020 | fits 1x A12xxx filter element      |
|                   | 0030 | fits 1x DMD0030xxxx filter element |
| 3. ELECTRIC MOTOR | 4    | 4 poles electric motor             |
| 4. ELECTRIC MOTOR | M    | single phase electric motor        |
| 5. FLOW RATE      | 015  | flow rate 15 l/min                 |
| 6. SEALS          | B    | NBR                                |
| 7. VERSION        | 01   | STD version                        |

## FILTER ELEMENTS

The filter element must be replaced when:

1. the oil transfer is completed (if used as oil transfer unit).
2. the target cleanliness class is reached (when used as off line filtration unit); (more filter elements could be necessary to reach it, depending on the oil volume to be cleaned and from the initial contamination level).
3. the clogging indicator shows.
4. a different filter media is required. We recommend a fine filtration; filter elements for water removal available when needed. Here below a list of the suggested filter elements:

| FILTER ELEMENT | FITS   | FILTRATION  |
|----------------|--------|---|
| A121G03        | FU0020 | glassfiber $\beta_{4,5 \mu m (c)} \geq 1000$                |
| A121G10        | FU0020 | glassfiber $\beta_{12 \mu m (c)} \geq 1000$                 |
| A121GW10       | FU0020 | glassfiber $\beta_{12 \mu m (c)} \geq 1000$ +water absorber |
| DMD0030G03B    | FU0030 | glassfiber $\beta_{4,5 \mu m (c)} \geq 1000$                |
| DMD0030G10B    | FU0030 | glassfiber $\beta_{12 \mu m (c)} \geq 1000$                 |
| DMD0030GW10B   | FU0030 | glassfiber $\beta_{12 \mu m (c)} \geq 1000$ +water absorber |

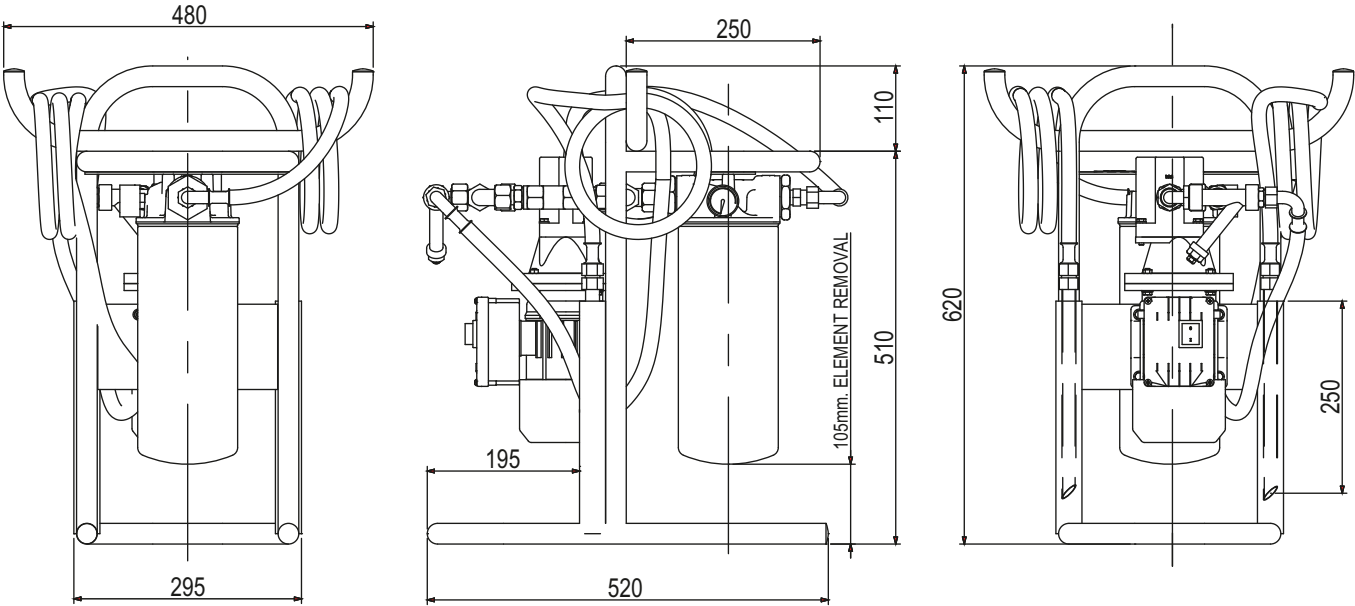
For the full range of filter elements available, please refer to the respective catalogue:

FA1 series, size 20 and 21 for FU0020

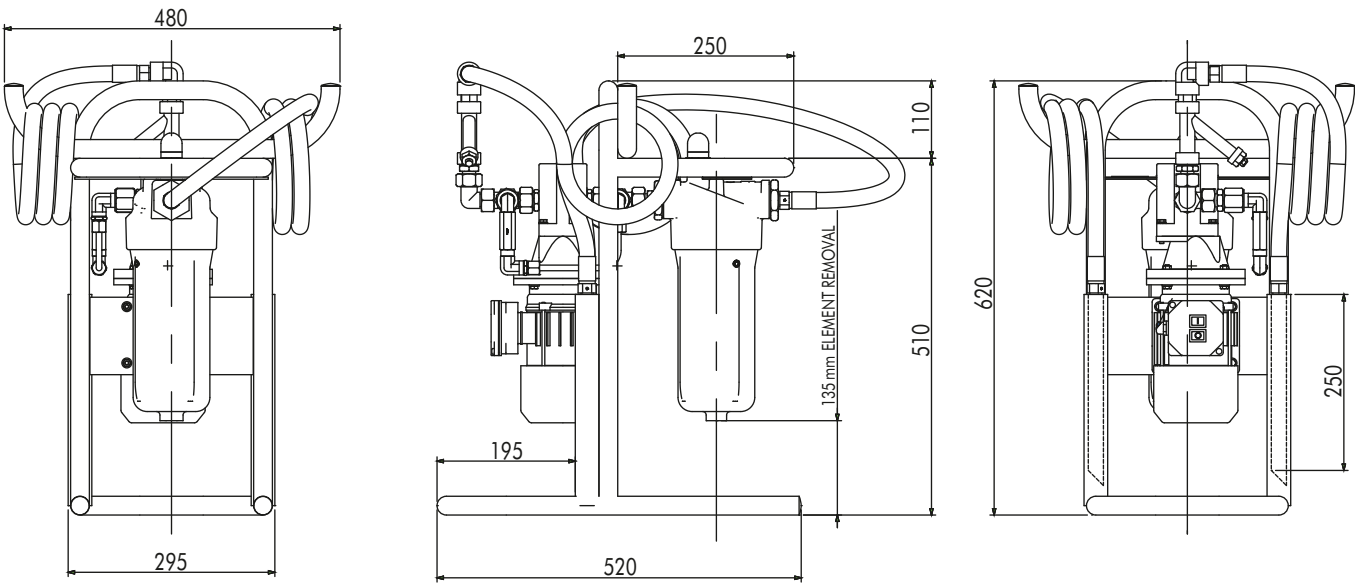
F040 series, size DMD0030 for FU0030.

OVERALL DIMENSIONS

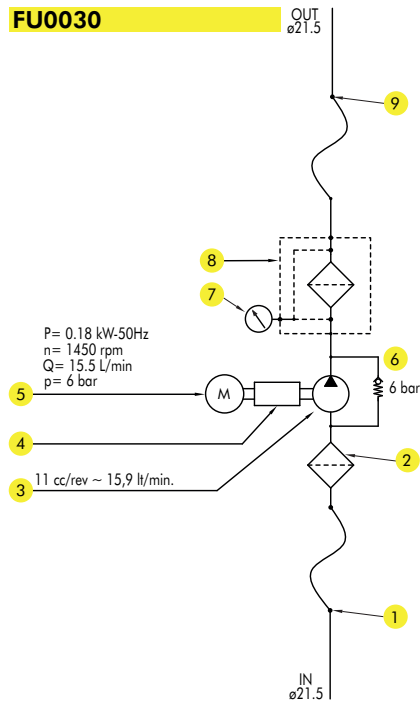
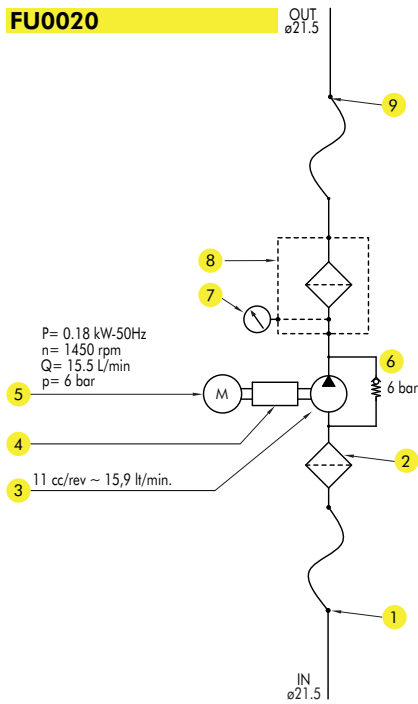
FU0020



FU0030



### HYDRAULIC SCHEME



### COMPONENT LIST

| ITEM | DESCRIPTION  |
|------|--|
| 1    | Flexible hose l = 3 m with rigid end                       |
| 2    | Suction filter "Y" type                                    |
| 3    | Gear pump 15 l/min.  |
| 4    | Motor-pump coupling arrangement                            |
| 5    | Single phase electric motor 0,18 kw with start/stop button |
| 6    | Safety relief valve  |
| 7    | Clogging indicator   |
| 8    | Filter housing   |
| 9    | Flexible hose l = 3 m with rigid end                       |

### ELECTRIC DIAGRAM

